



Excellent performance thanks to optimal ducting and installation.

Intelligently selecting and installing the duct system not only has a very positive effect on the output of the ventilation system; it also minimises the noise generated. It is therefore decisive for the efficiency of the entire ventilation system.

The duct type.

In Gaggenau's accessories catalogue, customers can select the type of duct appropriate to their needs, whether aluflex pipe, round duct or a flat duct system. Depending on the duct type, they can choose from the nominal sizes DN 150 and DN 200. For maximum output with minimal noise, the diameter should always be as large as possible.

For straight ducting, the use of plastic or metal ducts with smooth, level inner surfaces is recommended. These enable a laminar flow of air during extraction, without air turbulence. For sections that are not straight and for bends, aluflex pipe are preferred because they make it possible to avoid hard edges.

Where space limitations are a concern, the first choice is the Gaggenau flat duct system. The remarkable design with special conducting fins in the bends and junction pieces allow for a very low height and large nominal size, thus ensuring very efficient air circulation. This also applies in situations where there are many bends. We strongly discourage the use of other flat ducts due to the high output losses in duct bends, duct corners and junction pieces.

Spiral and corrugated ducts should definitely not be used. In addition to displaying the worst flow conditions, these types also tend to flutter and thus generate noise.

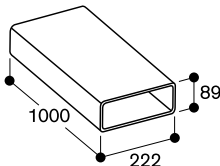
The duct diameter.

A good guideline here is: The duct diameter should be as large and constant as possible, while the ducting should be as short and straight as possible. The wall outlet must correspond to the duct diameter.

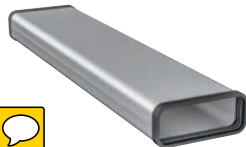
The building regulations.

Please observe the local applicable building regulation when configuring ventilation solutions.
The metal ducts are particularly suitable for Vario downdraft and Table ventilation in countries with increased fire protection requirements.
The metal ducts are non-combustible and suitable for all combinations.

AD 852 010
Flat duct
Plastic
DN 150 flat
Length 1000 mm

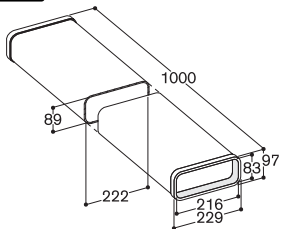


AD 854 010
Flat duct
Metal
DN 150 flat
Length 1000 mm



Features
Sealing is pre-assembled on each side.

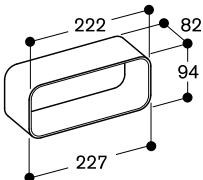
Planning notes
Suitable for flat duct bends.
To connect 2 flat ducts, a flat duct connecting piece is required.
If the removal of the seal is necessary, the connection must be fastened and sealed with aluminium adhesive tape.



AD 852 040
Flat duct pipe connector
Plastic
DN 150 flat



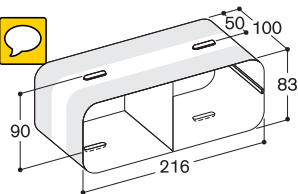
Planning notes
Flat duct pipe connector necessary for: Combination of 2 flat ducts and direct connection of flat duct to AD 854 046 and AD 854 048, also direct connection remote fan AR 403.



AD 854 040
Flat duct connecting piece
Metal
DN 150 flat
To connect 2 flat ducts.



Planning notes
Suitable for flat duct and flat duct flex.

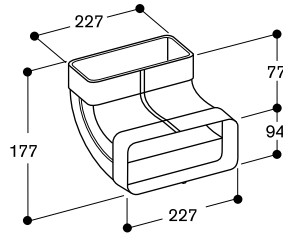


AD 852 030

Flat duct bend 90° vertical
Plastic
DN 150 flat

Planning notes

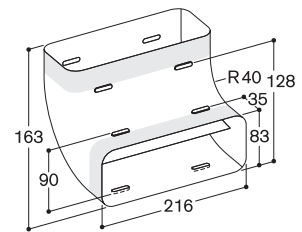
For connecting 2 duct bends together (e.g. 90° horizontal duct bend and a 90° vertical duct bend), a piece of flat duct is required, which can be shortened to the required length by cutting it to size.

**AD 854 030**

Flat duct bend 90° vertical
Metal
DN 150 flat

Planning notes

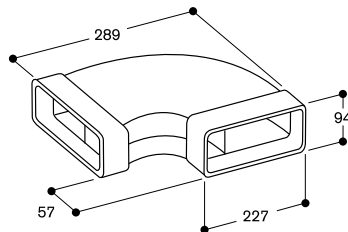
Suitable for flat duct and flat duct flex.

**AD 852 031**

Flat duct bend 90° horizontal
Plastic
DN 150 flat

Planning notes

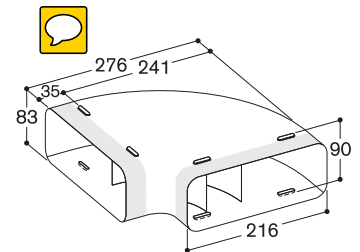
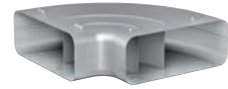
For connecting 2 duct bends together (e.g. 90° horizontal duct bend and a 90° vertical duct bend), a piece of flat duct is required, which can be shortened to the required length by cutting it to size.

**AD 854 031**

Flat duct bend 90° horizontal
Metal
DN 150 flat

Planning notes

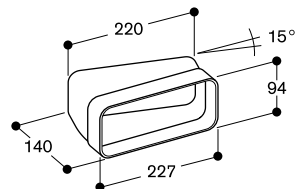
Suitable for flat duct and flat duct flex.

**AD 852 032**

Flat duct bend 15° horizontal
Plastic
DN 150 flat

Planning notes

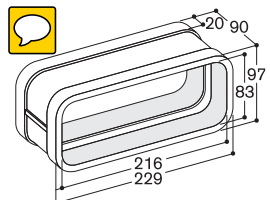
Suitable for providing compensation in cases where there is a slight offset in the duct guide or for duct guides which are not seated square in cramped spaces.

**AD 854 000**

Flat duct bend connecting piece
Metal
DN 150 flat
To connect 2 flat duct bends.

Planning notes

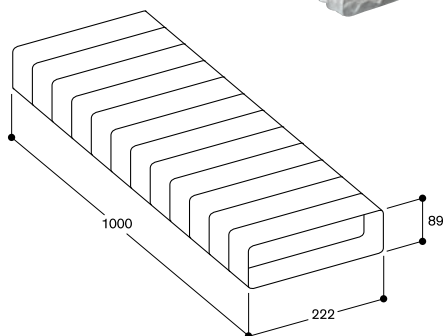
If the removal of the seal is necessary, the connection must be fastened and sealed with aluminium adhesive tape.

**AD 853 010**

Flat duct system flex pipe
Plastic
DN 150 flat
Length: 1000 mm

Planning notes

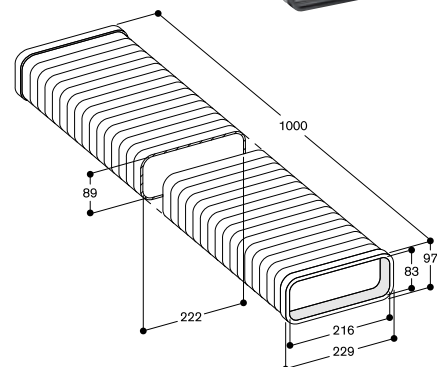
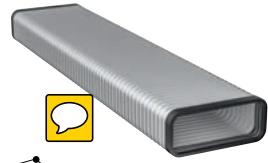
Recommended for the combination with the air collector box AD 704 049 and AL 400 downwards.

**AD 858 010**

Flat duct flex pipe
Metal
DN 150 flat
Length 1000 mm

Planning notes

Suitable for flat duct bends.
Flat duct flex pipe can be shortened.
Useful for bends (<90°) or for parallel offsetting.
If the removal of the seal is necessary, the connection must be fastened and sealed with aluminium adhesive tape.



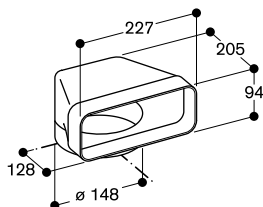
Accessories | special accessories for ventilation appliances

AD 852 042

Flat duct adapter round 90°
Plastic
DN 150 flat

Planning notes

Direct connection to aluflex pipe.

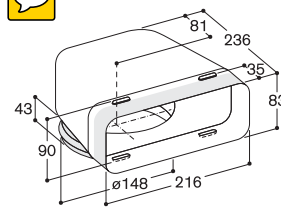


AD 854 032

Flat duct adapter round 90°
Metal
DN 150 flat/round
Transition from flat duct to round duct.

Planning notes

Suitable for flat duct and flat duct flex.
Suitable for round duct and aluflex pipe.

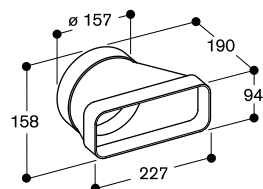


AD 852 041

Flat duct adapter round
Plastic
DN 150 flat

Planning notes

Connection to the round adapter of a remote fan unit or wall box.
In combination with aluflex pipe, the pipe connector RV is necessary.

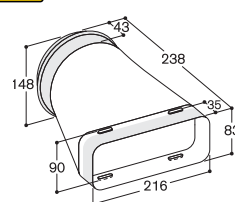


AD 854 041

Flat duct adapter round
Metal
DN 150 flat/round
Transition from flat duct to round duct.

Planning notes

Suitable for flat duct and flat duct flex.
Suitable for round duct and aluflex pipe.



AD 990 090

Adhesive tape for duct components
Plastic
10 m/roll

Planning notes

In order that ducting is well sealed and air leaks are consequently prevented, the adhesive tape AD 990 090 is necessary at all pipe connection piece points. The adhesive tape is heat- and UV-resistant.

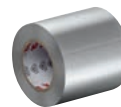


AD 990 091

Adhesive tape for duct components
Aluminium
Width 50 mm
10 m/roll

Planning notes

Useful for all connections of duct components.

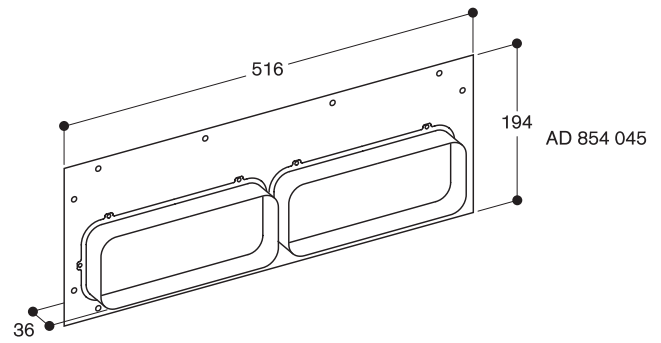


AD 854 045

Connecting piece
AL 400 for flat duct, 2 x DN 150
Metal zinc plated
DN 150 flat

Planning notes

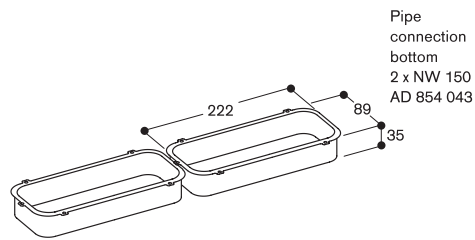
Can be fitted on the front or back side of the AL 400.

**AD 854 043**

Connecting piece
AL 400 for flat duct, 2 x DN 150
Metal zinc plated
DN 150 flat

Planning notes

Can be fitted on the underside of the AL 400.
Set of two.

**CA 284 011**

Flat duct connecting piece for CV 28.
Plastic
DN 150 flat

Planning notes

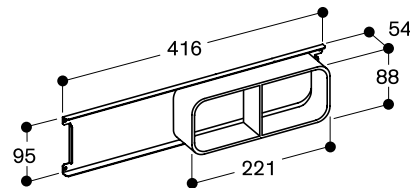
Can be combined with the flex induction cooktop with integrated ventilation system CV 28..
Consists of 1 x 90° bend and 3 extensions for deeper worktops.
1 connecting piece for flat duct
DN 150

**AD 854 046**

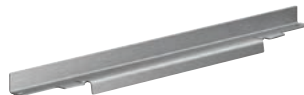
Flat duct connecting piece for VL 414
Metal zinc plated with plastic
DN 150 flat

Planning notes

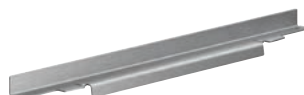
One piece needed for each VL 414 to be connected to flat ducts.
Outlet to the left/right possible.

**Ventilation moulding****AA 414 010**

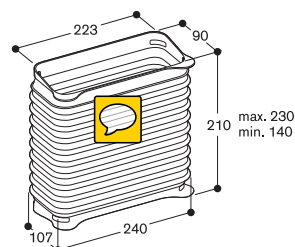
Ventilation moulding for VL 414 next to gas appliance.

**Ventilation moulding****LS 041 001**

Ventilation moulding for VL 200 next to gas appliance.

**AD 410 040**

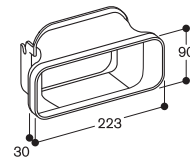
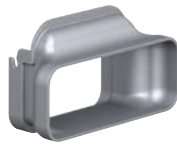
Flexibel connecting piece for VL 200
DN 150 flat



Accessories | special accessories for ventilation appliances

AD 851 041

Connecting piece VL 200 for extension
with flat duct DN 150 for extra deep
worktop

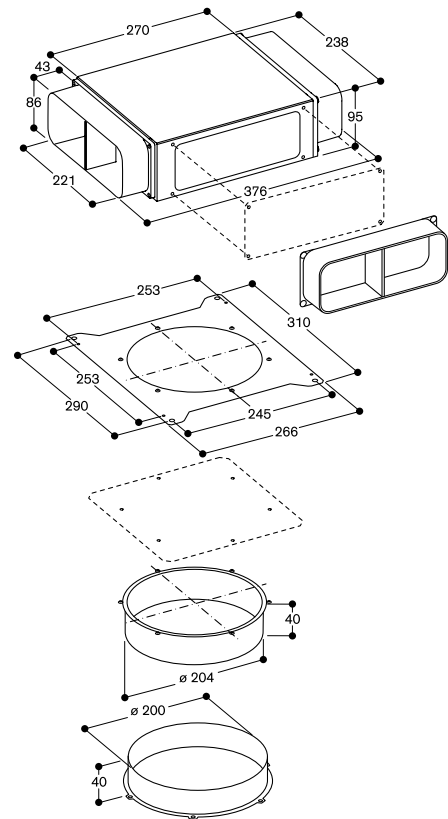
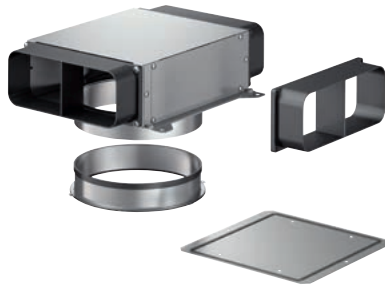


AD 854 048

Air collector box DN 150 flat duct

Planning notes

For connecting two filter modules
AC 402, integrate a controle module
with or without light in between:
2 x DN 150 flat duct air intake.
1 x DN 150 flat duct air outlet.



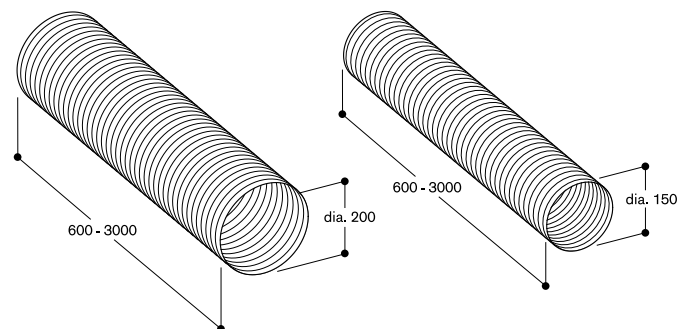
AR 050 200

Aluflex pipe
Aluminium
DN 200 round



AD 751 010

Aluflex pipe
Aluminium
DN 150 round



Planning notes

Recommended only for routing ducting through air paths which are not in a straight line or for round wall and floor apertures. 2 hose clamps enclosed. For combination with all adapters, press the pipe wall flat at the ends. 2 aluflex pipes must be connected with a pipe connection piece for aluflex pipes.

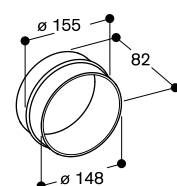
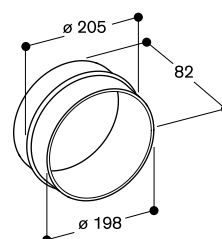


RV 040 200

Pipe connector for aluflex pipe
Metal zinc plated
DN 200 round

RV 040 150

Pipe connector for aluflex pipe
Metal zinc plated
DN 150 round



Planning notes

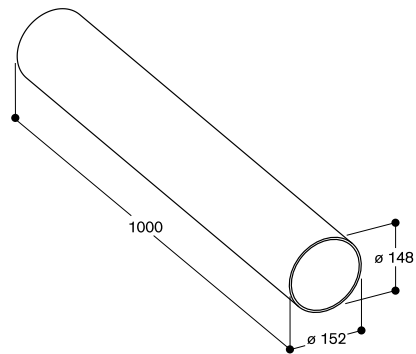
Pipe connector necessary when 2 aluflex pipes are combined.

AD 752 010

Round duct
Plastic
DN 150 round

Planning notes

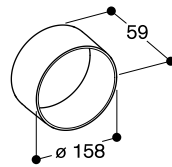
2 round ducts must be connected with the pipe connector AD 754 090.

**AD 754 090**

Pipe connector for plastic pipe
Plastic
DN 150 round

Planning notes

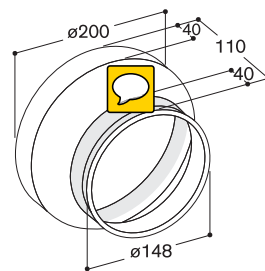
2 round ducts must be connected with the pipe connector AD 754 090.

**AD 704 040**

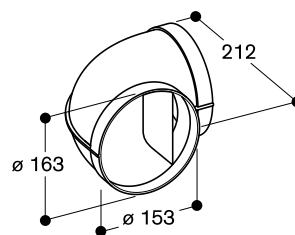
Pipe adapter DN 200/150 round
Metal zinc plated
DN 200 round
Reduce DN 200 connection to DN 150 connection.

Planning notes

Can be combined with telescopic wall-duct DN 200 and pipe connector DN 150.

**AD 752 030**

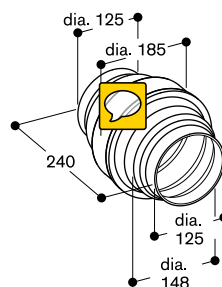
Duct bend 90°
Plastic
DN 150 round

**AD 752 070**

Condensation trap
Plastic
DN 150 round

Planning notes

Recommended under vertical pipe sections. Installation on the bottom end of the pipe.



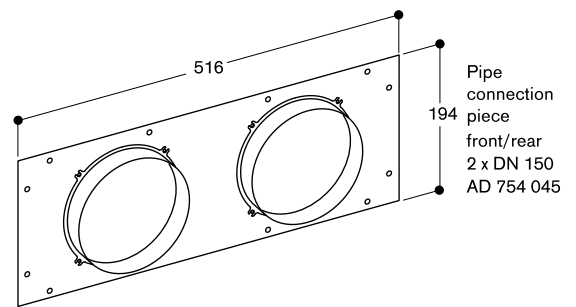
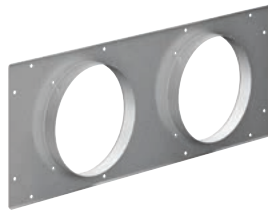
Accessories | special accessories for ventilation appliances

AD 754 045

Connecting piece AL 400 for
aluflex pipe, 2 x DN 150 round
Metal zinc plated
DN 150 round

Planning notes

Can be fitted on the front or back
of the AL 400.



AD 724 042

Connection piece for round pipe
DN 150

Planning notes

For VL 414

For installation to left or right side of
VL additional adapter AD 724 041 is
necessary.

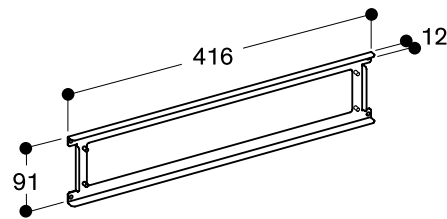


AD 724 041

Round duct connection
additional adaptor for
VL 414 on the side
Metal zinc plated
DN 150 round

Planning notes

One piece needed for each VL
to be connected to round ducts
DN 150 to the left/right.

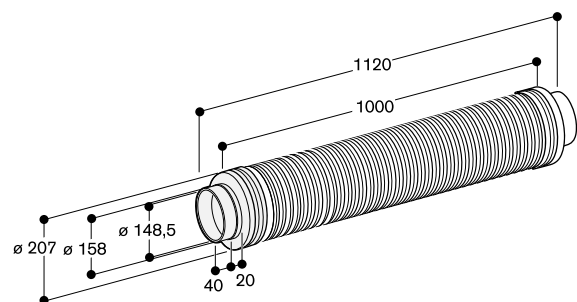


SD 011 150

Silencer
Aluminium
DN 150 round

Planning notes

Noise reduction with straight installati-
on approx. 2 dB(A), duct bend approx.
3–4 dB(A).

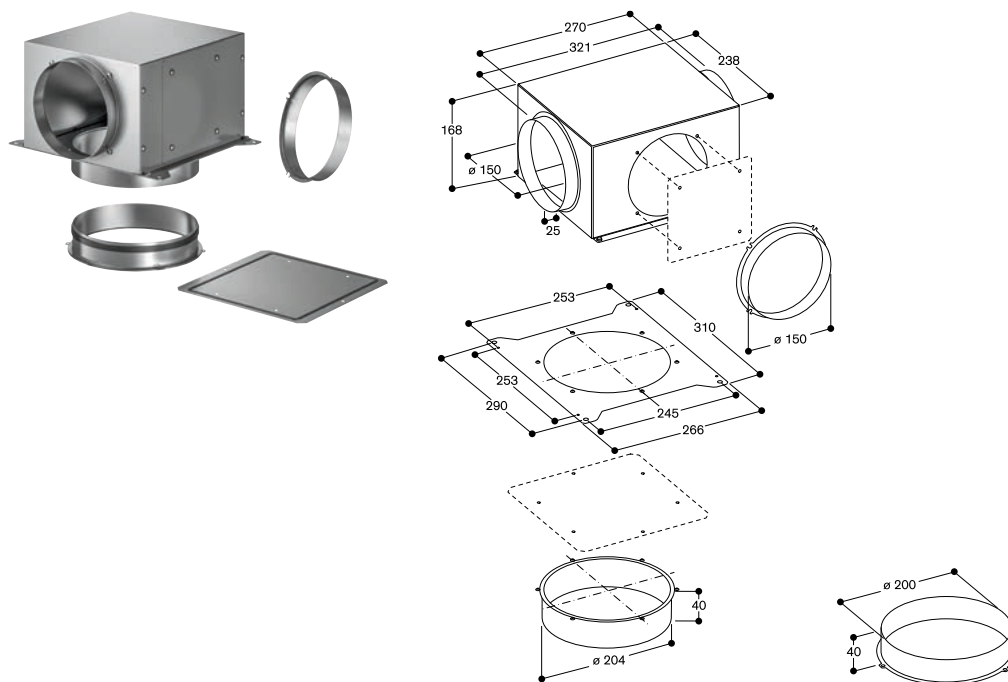


AD 754 048

Air collector box DN 150 round pipe

Planning notes

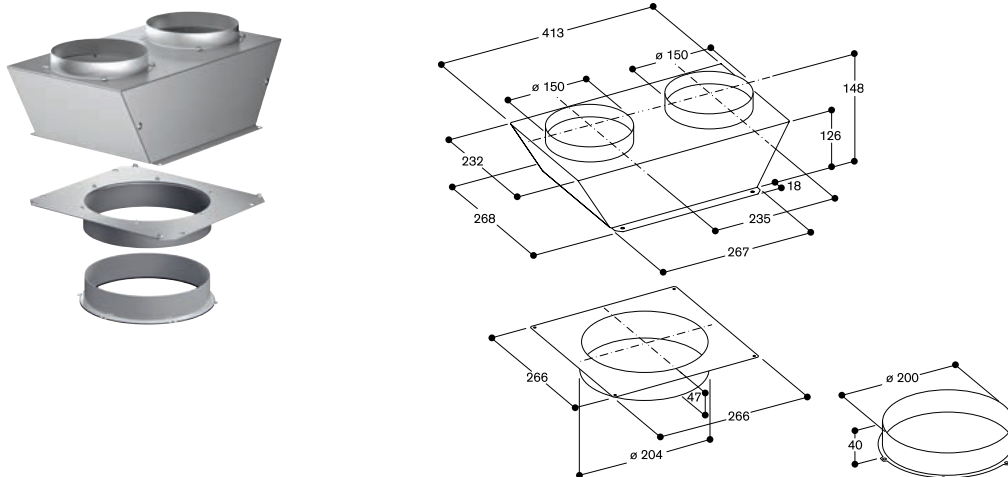
For connecting two filter modules AC 402, integrate a controle module with or without light in between:
 2 x DN 150 round duct air intake.
 1 x DN 150 round duct air outlet.

**AD 704 048**

Air collector box round duct for AL 400
 Metal zinc plated
 DN 150 round

Planning notes

2 x DN 150 round duct air intake.
 To connect 1 x AL 400 to AR 403/413.
 1 x DN 200 air outlet.

**AD 704 049**

Air collector flat duct for AL 400
 Metal zinc plated
 DN 150 flat

Planning notes

2 x DN 150 flat duct air intake
 To connect 1 x AL 400 to remote fan AR 403/AR 413 bottom side.
 To connect the AL 400 and the remote fan AR 403/AR 413 the flex duct AD 853 010 is possible and can be shortened to the appropriate length.
 The package includes four cable straps for fixing the flex duct AD 853 010.

